



ViCAP ALERT UNIDENTIFIED REMAINS – SIMPSON COUNTY, KY

Attention: Homicide, Missing Persons and Crime Analysis Units



Found: October 9, 2001 – Interstate
65, Mile Marker 12, Simpson
County, KY

Race: White

Sex: Female

Age: 25 – 35 (time of incident)

Height: 5'4" – 5'8" (approximately)

Weight: 90 – 130 pounds (approximately)

Hair: Reddish - Brown (12 – 14
inches long)

Eyes: Unknown

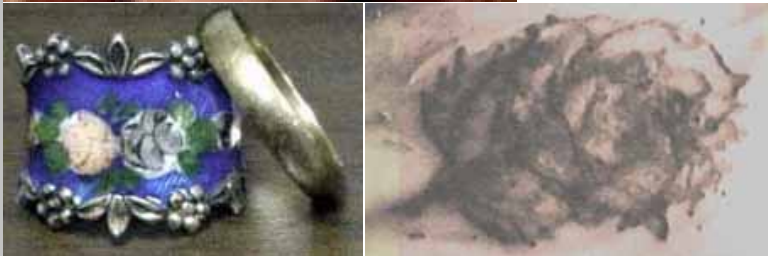
Clothing: Unknown

Distinguishing Characteristics: A
healed fracture in a rib and the victim's upper
right arm. An outlined tattoo of a rose on the
victim's left breast.

Dental: Records are available.

Agency Case #: 3-01-1491

NamUs #: 71



On October 9, 2001, a survey crew discovered the victim's remains near the northbound lanes of Interstate 65, in Simpson County, Kentucky. The victim was located down a steep embankment in a grove of trees, around north mile marker 12, which is 12 miles north of the Tennessee and Kentucky state lines. The victim was wearing two rings; a gold band similar to a wedding ring and a silver ring with a painted enamel blue background with flowers and leaves (see the image above). For further information and photographs regarding this victim, refer to the National Missing and Unidentified Person System (NamUs) unidentified persons database, case report number UP# 71.

To provide or request additional information, please contact Detective Jason Lanham, Kentucky State Police, Post 3, Bowling Green, Kentucky, at 270-782-2010, or Jason.Lanham@ky.gov or FBI ViCAP at (800) 634-4097 or vicap@leo.gov.

**Contact ViCAP for information on how your agency can obtain access to the ViCAP Web
National Crime Database.**