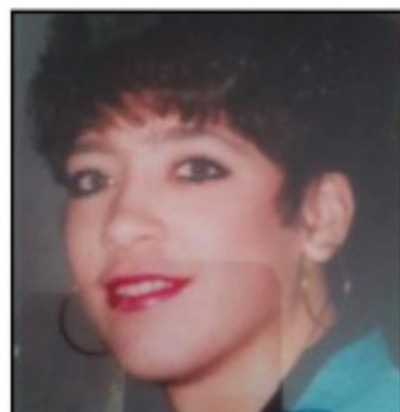




V i C A P A L E R T
UNSOLVED HOMICIDE

Attention: Violent Crime / Cold Case / Crime Analysis Units



KIMBERLY ANN YOHE

Date Last Contact: 5/8/1996

Location Last Seen: Etters, PA

Race: White

Sex: Female

Age: 20

Height: 5'2"

Weight: 120 lbs

Hair: Brown

Eyes: Blue

Vehicle: Blue 1987 Mazda 626

Agency Case #: H1-879882



Kimberly Yohe (W/F/20) was last seen on 5/8/1996 at her residence in Etters, PA. Two weeks later, on 5/22/1996, Yohe's body was recovered from the Susquehanna River in Dauphin County, PA. Later that same day, Yohe's vehicle, a 1987 Mazda 626, was discovered parked at Gables Truck Stop along I-81, 22 miles north of where the body was recovered. An autopsy determined that Yohe's cause of death was ligature strangulation, with lacerations to the head and ligature marks on the neck and right ankle. Investigators are asking anyone with information regarding this case to please come forward.

To provide or request additional information, please contact:

- Trooper Jeremiah R. Mistick, Pennsylvania State Police, (717) 671-7540, JMistick@pa.gov -
- FBI ViCAP, (800) 634-4097, vicap@fbi.gov -

Contact ViCAP for information on how your law enforcement agency can obtain access to the ViCAP National Crime Database and view this case.