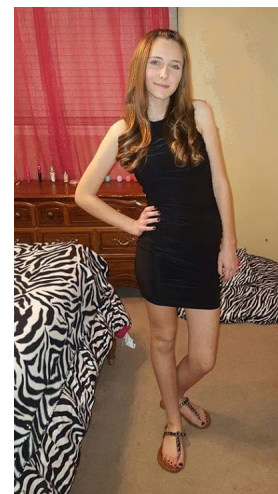
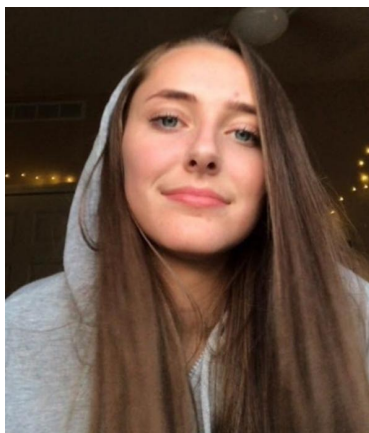




MISSING PERSON

KARLIE LAIN GUSÉ

Mono County, California
October 13, 2018



DESCRIPTION

Date(s) of Birth Used: May 13, 2002	Hair: Dark Blonde
Eyes: Blue	Height: 5'7" (at time of disappearance)
Weight: 110 pounds (at time of disappearance)	Sex: Female
Race: White	Scars and Marks: Gusé has her left nostril pierced.

REWARD

The FBI is offering a reward of up to \$5,000 for information that leads to the location of Karlie Lain Gusé.

DETAILS

Karlíe Lain Gusé, a then 16-year-old female, was reported missing by her family on the morning of October 13, 2018. Karlíe was seen by her family at their residence in the White Mountain Estates area of Chalfant Valley in Mono County, California, during the pre-dawn hours of October 13, 2018. At some time during the early morning, Karlíe left the family residence while likely wearing gray sweatpants or jeans, a white t-shirt, and Vans brand shoes. Karlíe left her personal belongings behind at the residence including her mobile phone.

Karlíe was last seen by witnesses walking south approximately 30 yards east of Highway 6 and 100 yards south of Sierra View Road on the morning of October 13, 2018. A thorough search of the area and subsequent investigation has been unsuccessful in locating Karlíe and she has not been in contact with family or friends since she went missing.

The Mono County Sheriff's Office and the FBI continue to seek information that will assist in locating Karlíe.

The Things They Carry Video Series

- Zach Gusé: My Whole Body and Soul
- Melissa Gusé: Your Mind Wanders
- Richard Eddy: Witness
- Brad Bilderback: Somebody Knows Something
- David Kaulk: We May Never See Her Again
- Zach Gusé: I Lost My Mind
- Melissa Gusé: Damaged Family
- Kole Gusé: She's Probably Dead
- Ashley Forbes: Nobody in Town Goes Missing Like This
- Branson Jernigan: It Seems Like People Have Been Forgetting About Her
- Zach Gusé: I Wanted to Let the Light In
- Brent Gillespie: Please Come Forward

If you have any information concerning the disappearance of Karlíe Lain Gusé, you are encouraged to contact the Mono County Sheriff's Office by emailing them at karliegusetips@monosheriff.org or calling them at 760-932-5678. You may also contact the Sacramento Office of the FBI

by calling 916-746-7000, your local FBI office, the nearest American Embassy or Consulate, or you can submit a tip online at tips.fbi.gov. All tips can remain anonymous.

Field Office: Sacramento