

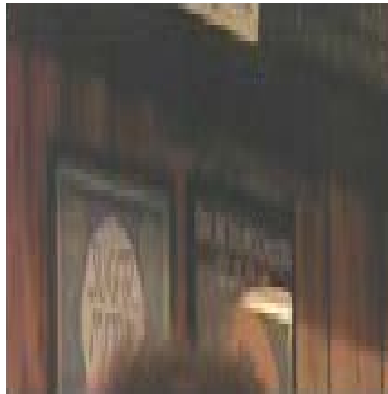


Seeking Information

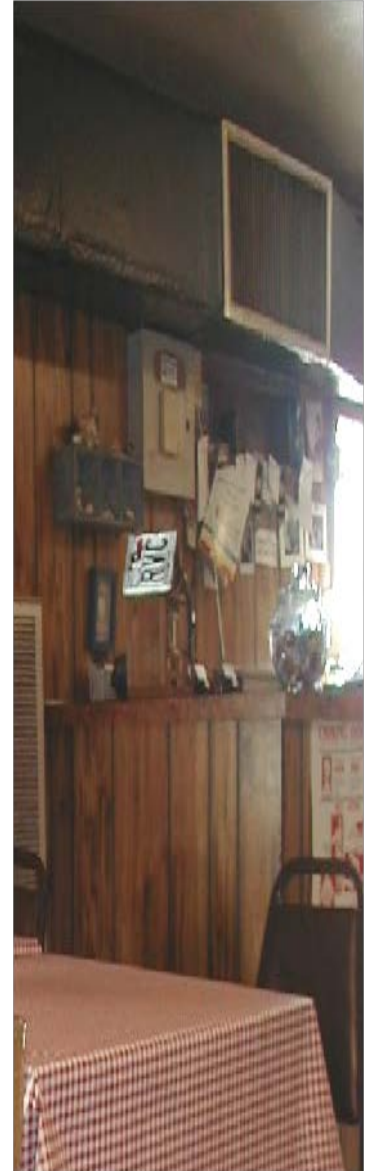
Law enforcement officials are seeking information regarding the below images, which may help lead to the identification and rescue of child victims. The FBI utilizes image analysis to identify clues to where a child may be held. By recognizing these clues and/or sharing additional observations from the backgrounds of these images, you may help first to identify and rescue the child victim(s) and second to capture the perpetrator. There is no clue or piece of information too small.



(left) WH001:
Stained glass
window



(above) WH002:
"Sugar M..." framed image
on left side of wall



(right) WH003:
License plate
on
bird house
located on top
of the counter
in a restaurant

If you have any information concerning this case, please contact a Crimes Against Children Investigator at your local FBI office or the nearest American Embassy or Consulate, or submit a tip online at <https://tips.fbi.gov/>



Seeking Information

Law enforcement officials are seeking information regarding the below images, which may help lead to the identification and rescue of child victims. The FBI utilizes image analysis to identify clues to where a child may be held. By recognizing these clues and/or sharing additional observations from the backgrounds of these images, you may help first to identify and rescue the child victim(s) and second to capture the perpetrator. There is no clue or piece of information too small.



(left)
SP002: TV
and items
on tabletop



(left) SP001: Jersey on
chair on the right side of
the image

If you have any information concerning this case, please contact a Crimes Against Children Investigator at your local FBI office or the nearest American Embassy or Consulate, or submit a tip online at <https://tips.fbi.gov/>



Seeking Information

Law enforcement officials are seeking information regarding the below images, which may help lead to the identification and rescue of child victims. The FBI utilizes image analysis to identify clues to where a child may be held. By recognizing these clues and/or sharing additional observations from the backgrounds of these images, you may help first to identify and rescue the child victim(s) and second to capture the perpetrator. There is no clue or piece of information too small.



(above) SBL01: Ornaments



(right) SBL03:
Items on desk



(left)
SBL02:
Stuffed
hornet

If you have any information concerning this case, please contact a Crimes Against Children Investigator at your local FBI office or the nearest American Embassy or Consulate, or submit a tip online at <https://tips.fbi.gov/>



Seeking Information

Law enforcement officials are seeking information regarding the below images, which may help lead to the identification and rescue of child victims. The FBI utilizes image analysis to identify clues to where a child may be held. By recognizing these clues and/or sharing additional observations from the backgrounds of these images, you may help first to identify and rescue the child victim(s) and second to capture the perpetrator. There is no clue or piece of information too small.



(left)
GO002:
items in
bedroom
(i.e. stuffed
animals,
purses, etc.)

(below) GO003: Headboard
in bedroom



If you have any information concerning this case, please contact a Crimes Against Children Investigator at your local FBI office or the nearest American Embassy or Consulate, or submit a tip online at <https://tips.fbi.gov/>



Seeking Information

Law enforcement officials are seeking information regarding the below images, which may help lead to the identification and rescue of child victims. The FBI utilizes image analysis to identify clues to where a child may be held. By recognizing these clues and/or sharing additional observations from the backgrounds of these images, you may help first to identify and rescue the child victim(s) and second to capture the perpetrator. There is no clue or piece of information too small.



(above) SR001: Owl hooded sweatshirt



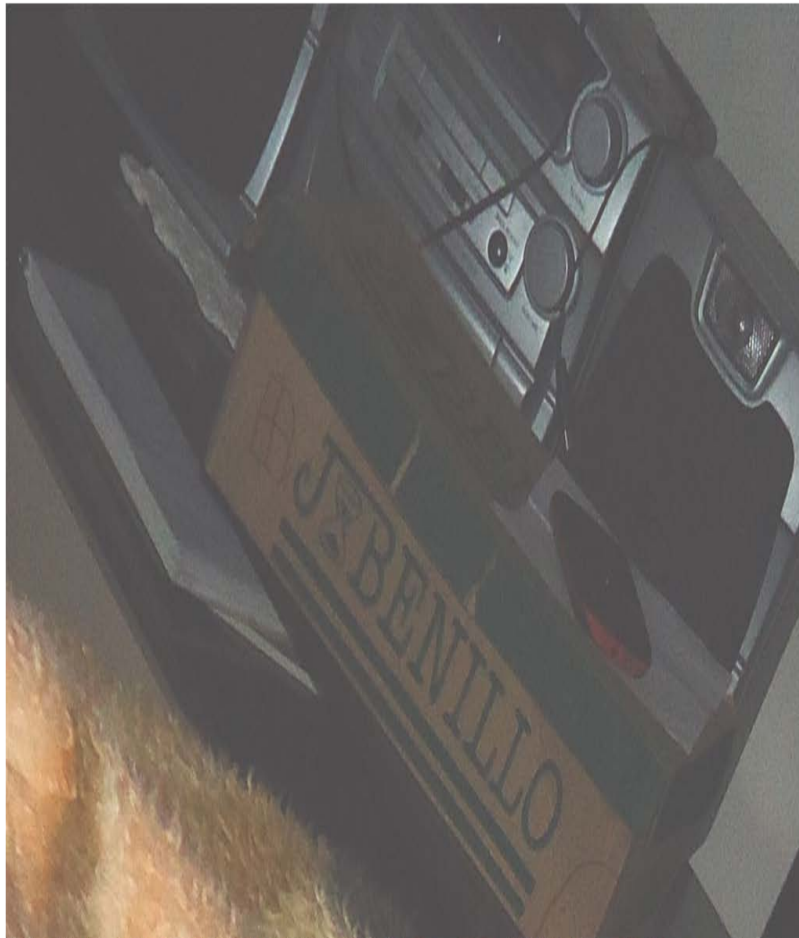
(above) SR002: Futon mattress

If you have any information concerning this case, please contact a Crimes Against Children Investigator at your local FBI office or the nearest American Embassy or Consulate, or submit a tip online at <https://tips.fbi.gov/>



Seeking Information

Law enforcement officials are seeking information regarding the below images, which may help lead to the identification and rescue of child victims. The FBI utilizes image analysis to identify clues to where a child may be held. By recognizing these clues and/or sharing additional observations from the backgrounds of these images, you may help first to identify and rescue the child victim(s) and second to capture the perpetrator. There is no clue or piece of information too small.



(above) CP001: "J BENILLO" box or logo

If you have any information concerning this case, please contact a Crimes Against Children Investigator at your local FBI office or the nearest American Embassy or Consulate, or submit a tip online at <https://tips.fbi.gov/>



Seeking Information

Law enforcement officials are seeking information regarding the below images, which may help lead to the identification and rescue of child victims. The FBI utilizes image analysis to identify clues to where a child may be held. By recognizing these clues and/or sharing additional observations from the backgrounds of these images, you may help first to identify and rescue the child victim(s) and second to capture the perpetrator. There is no clue or piece of information too small.



(above) CH001: Certificates on bedroom wall



(right) CH002: "TONE" poster

If you have any information concerning this case, please contact a Crimes Against Children Investigator at your local FBI office or the nearest American Embassy or Consulate, or submit a tip online at <https://tips.fbi.gov/>



Seeking Information

Law enforcement officials are seeking information regarding the below images, which may help lead to the identification and rescue of child victims. The FBI utilizes image analysis to identify clues to where a child may be held. By recognizing these clues and/or sharing additional observations from the backgrounds of these images, you may help first to identify and rescue the child victim(s) and second to capture the perpetrator. There is no clue or piece of information too small.

(below) CA001: Pink bag beside the chair



(right)
CA002:
Papers on
the floor
beside chair



If you have any information concerning this case, please contact a Crimes Against Children Investigator at your local FBI office or the nearest American Embassy or Consulate, or submit a tip online at <https://tips.fbi.gov/>



Seeking Information

Law enforcement officials are seeking information regarding the below images, which may help lead to the identification and rescue of child victims. The FBI utilizes image analysis to identify clues to where a child may be held. By recognizing these clues and/or sharing additional observations from the backgrounds of these images, you may help first to identify and rescue the child victim(s) and second to capture the perpetrator. There is no clue or piece of information too small.



(left) BR001:
"Dragon Beast"
poster



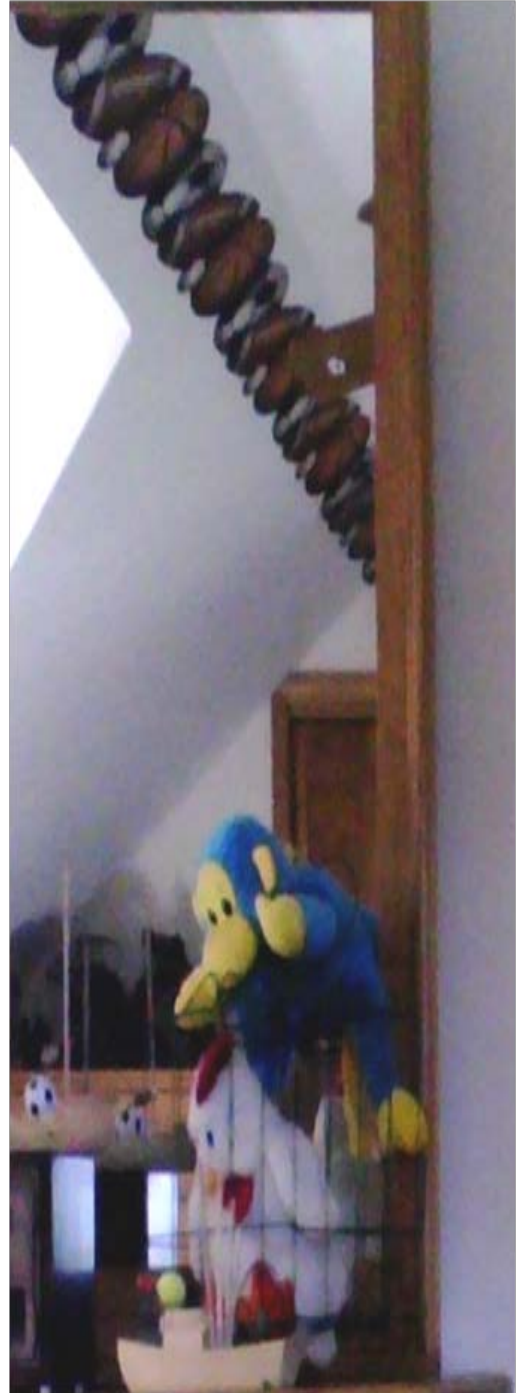
(right) BR003:
Football
(Chicago
Bears)
posters on
door

If you have any information concerning this case, please contact a Crimes Against Children Investigator at your local FBI office or the nearest American Embassy or Consulate, or submit a tip online at <https://tips.fbi.gov/>



Seeking Information

Law enforcement officials are seeking information regarding the below images, which may help lead to the identification and rescue of child victims. The FBI utilizes image analysis to identify clues to where a child may be held. By recognizing these clues and/or sharing additional observations from the backgrounds of these images, you may help first to identify and rescue the child victim(s) and second to capture the perpetrator. There is no clue or piece of information too small.



(right) BR002:
Stuffed animals,
sports wall trim

If you have any information concerning this case, please contact a Crimes Against Children Investigator at your local FBI office or the nearest American Embassy or Consulate, or submit a tip online at <https://tips.fbi.gov/>